

LK 845 ThermoMix



TECHNICAL DATA

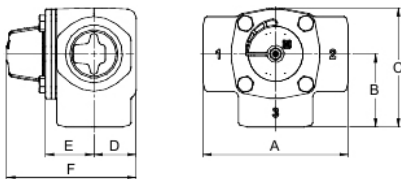
| | |
|--------------------------|---|
| Working temperature | Min. +5°C/Max. +110°C (+120°C briefly) |
| Ambient temperature | Min. +5°C/Max. +60°C |
| Max. working pressure | 1.0 MPa (10 bar) |
| Max. pressure difference | 50 kPa |
| Leakage | < 2% of Kvs at 50 kPa |
| Angle of rotation | 90°/360° |
| Torque | < 1 Nm |
| Media | Water - Glycol/Ethanol mixture max. 50% |
| Material, valve body | Cast iron EN 1561 EN-GJL-200 |
| Material, slide/spindle | Brass EN 12165 CW617N |
| Material, cover | Coated Aluminium |
| Material, O-rings | EPDM |
| Spindle sealing | Two O-rings |

LK 845 ThermoMix is a 3-way valve that can be used as a mixing valve or as a diverting valve in heating systems.

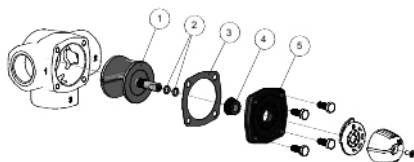
LK 845 ThermoMix is suitable for motorization.

The valve can be mounted at any angle. LK 845 ThermoMix can easily be adapted for right- or left-hand mounting.

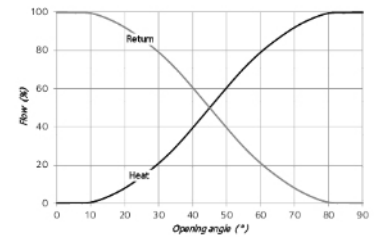
LK 845 - FEMALE THREAD



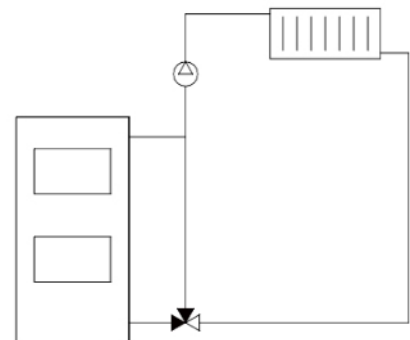
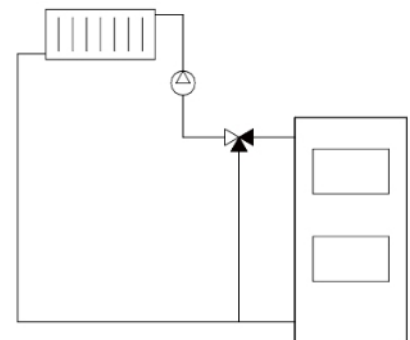
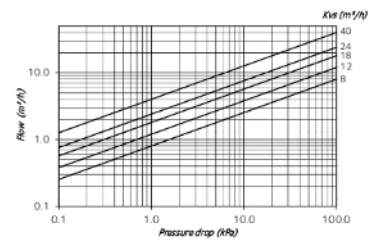
SPARE PARTS AND ACCESSORIES



Valve Characteristics



Capacity Diagram



| Article number | Kvs m ³ /h | Dim. | A mm | B mm | C mm | D mm | E mm | F mm | Weight kg |
|----------------|-----------------------|--------|------|------|------|------|------|------|-----------|
| 180106 | 8 | Rp ¾" | 112 | 56 | 96 | 36 | 35 | 106 | 2.2 |
| 180107 | 12 | Rp 1" | 112 | 56 | 96 | 36 | 35 | 106 | 2.1 |
| 180108 | 18 | Rp 1¼" | 127 | 63.5 | 103 | 37 | 42 | 113 | 3.0 |
| 180109 | 24 | Rp 1½" | 127 | 63.5 | 103 | 37 | 42 | 113 | 2.8 |
| 180110 | 40 | Rp 2" | 127 | 63.5 | 106 | 44 | 51 | 122 | 4.3 |

The valve is also available with the spindle rotated 180° (design E). For more information please contact our Sales Department.

Spare parts and Accessories

| Article number | Article | Included components |
|----------------|-------------------------------|---------------------|
| 187074 | Sealing kit 845/846, DN 20-50 | 2, 3 and 4 |
| 187075 | Repair kit 845, DN 20-50 | 1-5 |