



LK Armatur



CerboS

küttesüsteemid • müük • paigaldus • hooldus
tel 442 0222 / 434 1000 • www.cerbos.ee • info@cerbos.ee

THE NEW GENERATION MIXING VALVES

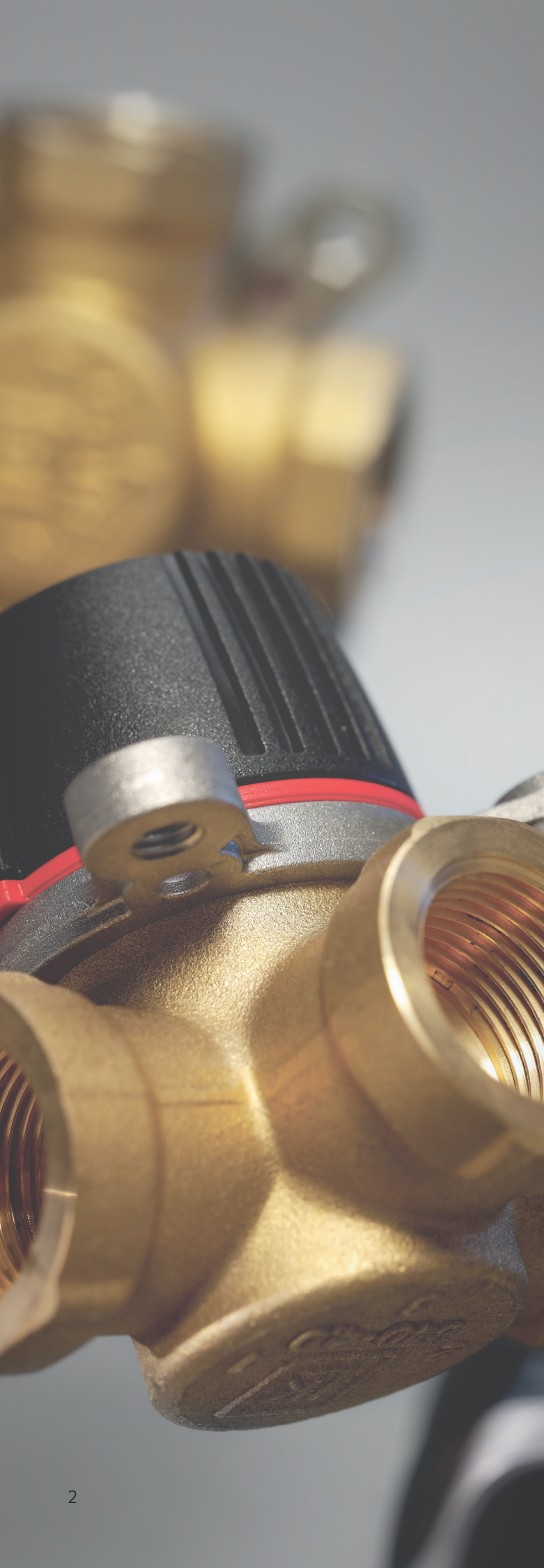


NEWS

LK 840 ThermoMix® 2.0

LK 841 ThermoMix® 2.0





LK Armatur, A One-Stop Supplier

Please visit www.lkarmatur.se, to find more information on our product range.

ON OUR WEBSITE YOU CAN ALSO DOWNLOAD:

- Technical data sheets
- Product catalogue
- Product brochures

OTHER GREAT TOOLS YOU CAN FIND ON OUR WEBSITE:

- Instruction videos
- Calculation tools
- Marketing material
- Newsletters
- And much more.....

Feel free to subscribe to our newsletter to get the latest info. To register, just go to www.lkarmatur.se



Cerbo

küttesüsteemid • müük • paigaldus • hooldus
tel 442 0222 / 434 1000 • www.cerbos.ee • info@cerbos.ee

LK ThermoMix® 2.0

- LK 840 ThermoMix 2.0
- LK 841 ThermoMix 2.0

Starting in the fall of 2017, we will gradually start introducing the next generation mixing valves

THE NEW GENERATION HAS THE FOLLOWING IMPROVEMENTS/CHANGES:

- Lower internal leakage on 3-way valves to increase energy savings, see technical data.
- Octagonal key grip, which simplifies accessibility and increases ease of installation.
- A more compact design that simplifies installation in confined spaces (please note, this is only valid for the internal threaded valves, see dimension diagram).
- Dimensions DN40 and DN50 has an outer cap made of composite material.
- The Kvs value of different dimensions follows practice, see table.
- The bevel of the spindle is on the same side as the closing port in the valve, see figure 1.
- On dimensions DN15-25, the outer cover has two attachment points for the anti-rotation bolt to actuators, instead of the previous four. This gives increased accessibility when installing the valve.

The changes made also include new spare parts. Old spare parts do not work for the new valves, see spare parts and accessories.

In order to easily distinguish existing ThermoMix against new ThermoMix we have added a groove in the spindle to all new ThermoMix valves, see figure 2.

In order to handle the changeover smoothly, the ThermoMix 2.0 range has been given new article numbers. Therefore, it is important to update all article numbers in your own business system as we start delivering our next generation. We will notify you when this is done via e-mail together with the order receipt.

FIGURE 1

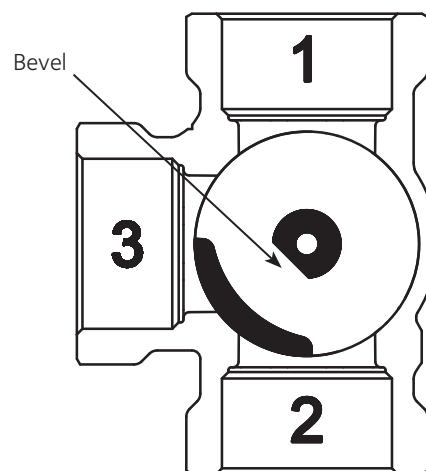
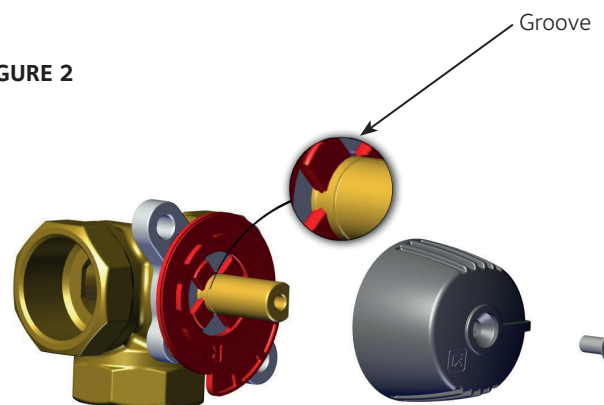
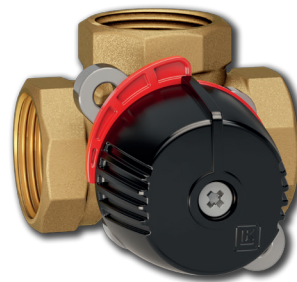


FIGURE 2



LK 840 ThermoMix® 2.0

- Low internal leakage
- Octagonal key grip
- Compact design



TECHNICAL DATA

Working temperature	Min. +5 °C/Max. +110 °C (+120 °C briefly)
Ambient temperature	Min. +5 °C/Max. +60 °C
Max. working pressure	1.0 MPa (10 bar)
Max. differential pressure	100 kPa
Leakage	< 0,2% av Kvs at 100 kPa (DN15-32) < 0,5% av Kvs at 100 kPa (DN40-50)
Angle of rotation	90°/360°
Torque	< 1 Nm (DN15-32)* < 1,5 Nm (DN40-50)*
Media 1	Water and Glycol mixture max. 50/50
Media 2	Water and Ethanol mixture max. 70/30
Thread standard	Rp - female thread G - male thread
Material, valve body	Brass EN 12165 CW617N
Material, internal cover	Composite
Material, external cover	Aluminium DN15-32, Composite DN40-50
Material, slide/spindle	Brass EN 12165 CW617N
Material, sealing	EPDM
Spindle sealing	Two O-rings

* Double torque if the valve is used diverting.

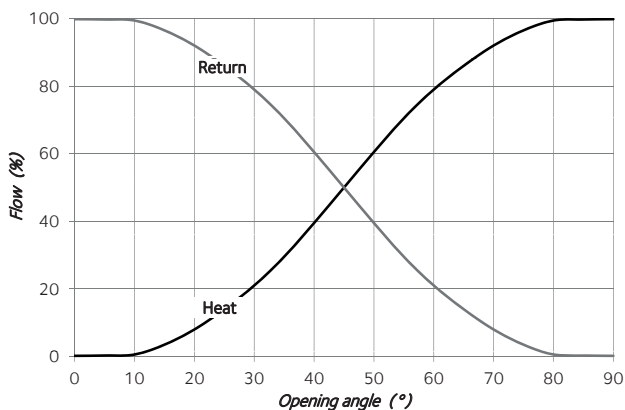
LK 840 ThermoMix® 2.0 is our next generation 3-way mixing valve. We have put focus on making our valves more compact, installation friendly and perhaps most important of all - reducing the internal leakage so that energy savings are optimized.

LK 840 ThermoMix® 2.0 is a 3-way mixing valve which can be used as a mixing or diverting valve in heating systems. The valve is suitable for motorization and can be fitted with insulation. For more information, see the insulation data sheet.

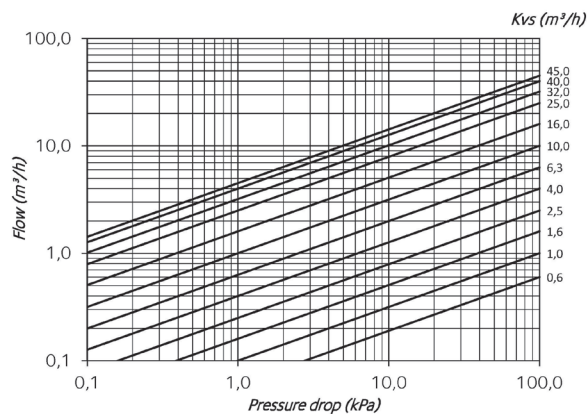
A compact design and a octagonal key grip gives an easier access and installation in tight spaces. The valve can be installed in any position and LK 840 ThermoMix® 2.0 can easily be adapted for right- or left-hand mounting.

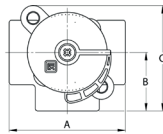
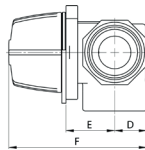
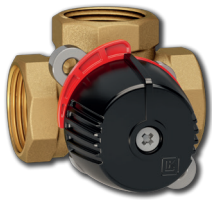
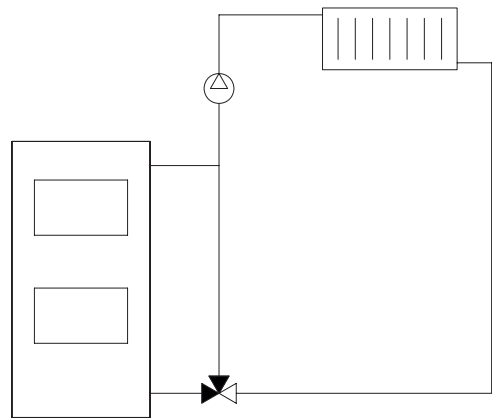
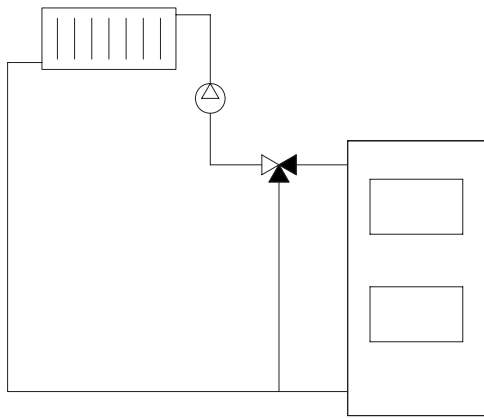
The valve requires no maintenance but the installation should be checked regularly.

VALVE CHARACTERISTICS



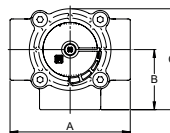
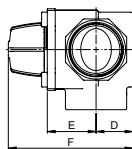
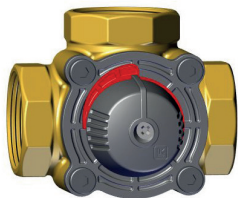
CAPACITY DIAGRAM





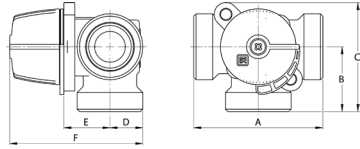
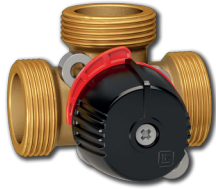
LK 840 2.0 - FEMALE THREAD

DIMENSION	KVS M ³ /H	A MM	B MM	C MM	D MM	E MM	F MM	WEIGHT KG
Rp ½"	0,6	70	35	63	18	29	81	0,5
Rp ½"	1,0	70	35	63	18	29	81	0,5
Rp ½"	1,6	70	35	63	18	29	81	0,5
Rp ½"	2,5	70	35	63	18	29	81	0,5
Rp ¾"	4,0	70	35	63	18	29	81	0,5
Rp ¾"	6,3	70	35	63	18	29	81	0,5
Rp 1"	6,3	70	35	63	20	29	83	0,5
Rp 1"	10	70	35	63	20	29	83	0,5
Rp 1¼"	16	84	42	77	24	32	90	0,8



LK 840 2.0 - FEMALE THREAD

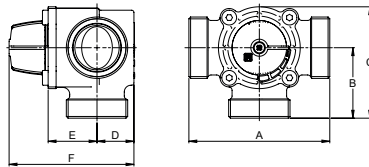
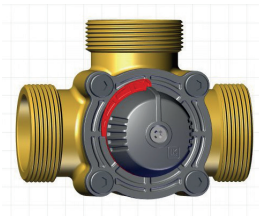
DIMENSION	KVS M ³ /H	A MM	B MM	C MM	D MM	E MM	F MM	VIKT KG
Rp 1½"	25	106	53	88	33	43	110	1,4
Rp 2"	40	106	53	88	33	43	110	1,6



LK 840 2.0 - MALE THREAD

DIMENSION	KVS M ³ /H	A MM	B MM	C MM	D MM	E MM	F MM	WEIGHT KG
G ¾"	2,5	80	40	68	18	29	81	0,6
G 1"	4,0	80	40	68	18	29	81	0,6
G 1"	6,3	80	40	68	18	29	81	0,6
G 1¼"	10	82	41	69	20	29	83	0,6
G 1½"	16	84	42	77	24	32	90	0,8

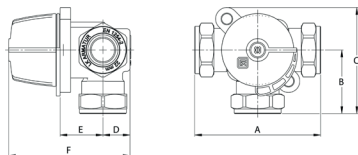
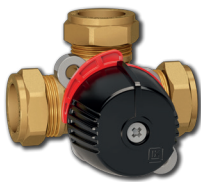
The connecting dimensions for 840 ThermoMix 2.0 male thread equals 840 ThermoMix 1.0.



LK 840 2.0 - UTVÄNDIG GÄNGA

DIMENSION	KVS M ³ /H	A MM	B MM	C MM	D MM	E MM	F MM	WEIGHT KG
G 2"	25	124	62	97	33	43	110	1,4
G 2"	32	124	62	97	33	43	110	1,4
G 2"	45	124	62	97	33	43	110	1,4

The connecting dimensions for 840 ThermoMix 2.0 male thread equals 840 ThermoMix 1.0.

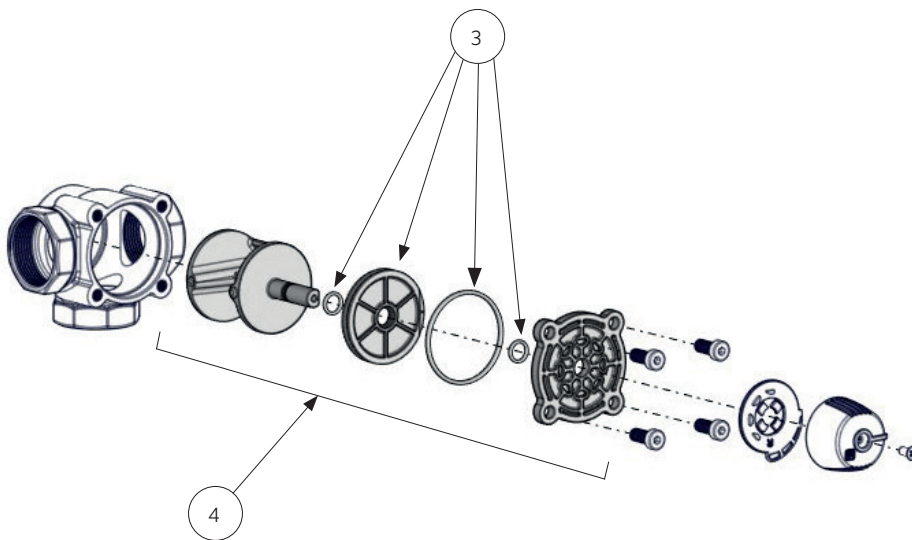
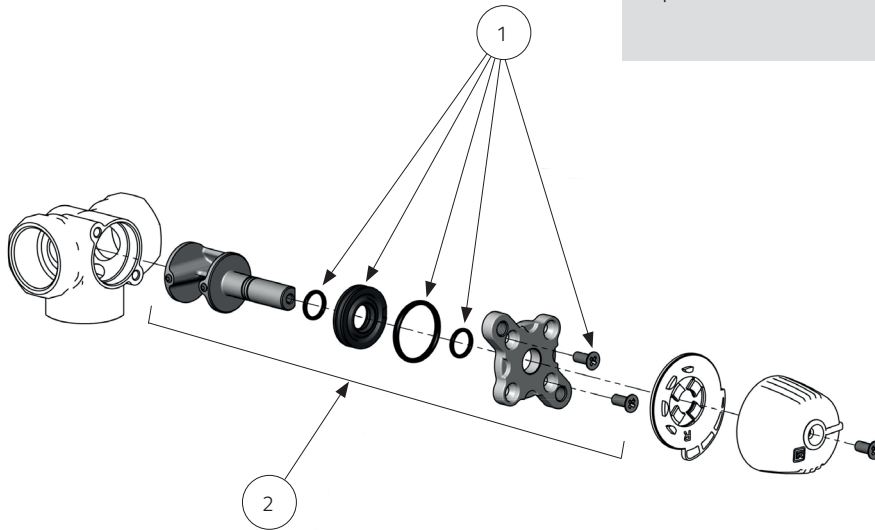


LK 840 2.0 - COMPRESSION FITTING

DIMENSION	KVS M ³ /H	A MM	B MM	C MM	D MM	E MM	F MM	WEIGHT KG
15	2,5	114	57	85	18	29	81	0,7
18	2,5	114	57	85	18	29	81	0,7
22	2,5	114	57	85	18	29	81	0,7
22	6,3	84	42	70	18	29	81	0,7
28	4,0	120	60	88	18	29	81	0,7
28	6,3	120	60	88	18	29	81	0,7

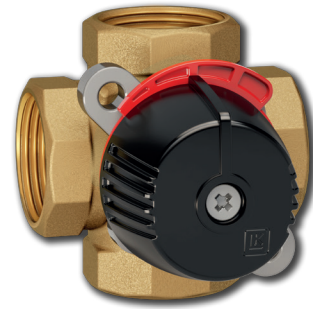
SPARE PARTS AND ACCESSORIES

ARTICLE	POSITION
Sealing kit 840/841 2.0, DN 15-20	1
Sealing kit 840/841 2.0, DN 25	1
Sealing kit 840/841 2.0, DN 32	1
Repair kit 840 2.0, DN 15-20	2
Repair kit 840 2.0, DN 25	2
Repair kit 840 2.0, DN 32	2
Sealing kit 840/841 2.0, DN 40-50	3
Repair kit 840 2.0, DN 40-50	4



LK 841 ThermoMix® 2.0

- Octagonal key grip
- Compact design



TECHNICAL DATA

Working temperature	Min. +5 °C/Max. +110°C (+120°C briefly)
Ambient temperature	Min. +5 °C/Max. +60°C
Max. working pressure	1,0 MPa (10 bar)
Max. differential pressure	100 kPa
Leakage	< 1,5% of Kvs at 50 kPa
Angle of rotation	90°/360°
Torque	< 1 Nm
Media 1	Water and Glycol mixture max. 50/50
Media 2	Water and Ethanol mixture max. 70/30
Thread standard	Rp - female thread G - male thread
Material, valve body	Brass EN 12165 CW617N
Material, internal cover	Composite
Material, external cover	Aluminium DN15-32, Composite DN40-50
Material, slide/spindle	Brass EN 12165 CW617N
Material, sealing	EPDM
Spindle sealing	Two O-rings

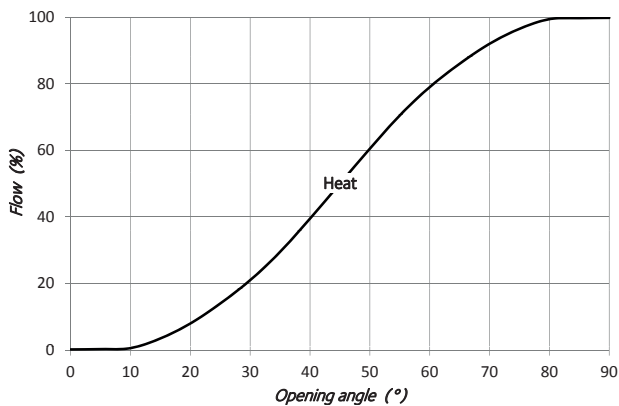
LK 841 ThermoMix® 2.0 4-way mixing valve is the next generation mixing valves where we put focus on making our 4-way mixing valves more compact and installation friendly with a octagonal key grip.

LK 841 ThermoMix® 2.0 is designed for heating systems where a high return temperature is required to prevent corrosion and thus extend the life length of the heat source. LK 841 ThermoMix® 2.0 is also suitable for motorization and can be fitted with insulation. For more information, see the insulation data sheet.

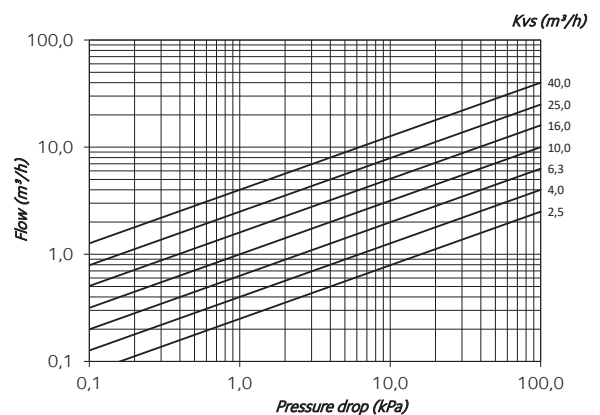
The valve can be installed in any position and it can easily be adapted for right- or left-hand mounting.

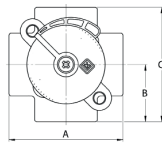
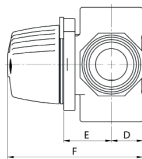
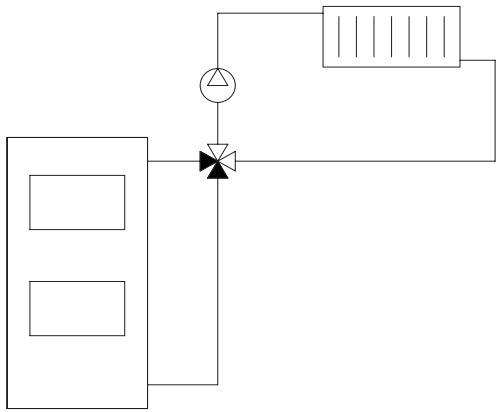
The valve requires no maintenance but the installation should be checked regularly.

VALVE CHARACTERISTICS



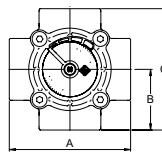
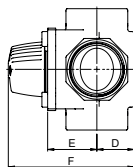
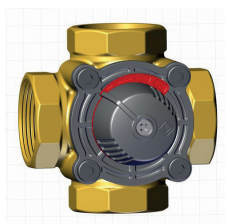
CAPACITY DIAGRAM





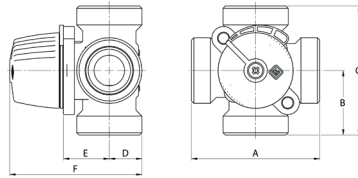
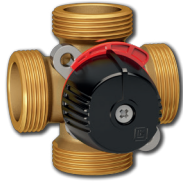
LK 841 2.0 - FEMALE THREAD

DIMENSION	KVS M ³ /H	A MM	B MM	C MM	D MM	E MM	F MM	WEIGHT KG
Rp 1/2"	2,5	70	35	70	18	29	81	0,7
Rp 3/4"	4,0	70	35	70	18	29	81	0,5
Rp 3/4"	6,3	70	35	70	18	29	81	0,5
Rp 1"	10	70	35	70	20	29	83	0,5
Rp 1 1/4"	16	84	42	84	24	32	90	0,8



LK 841 2.0 - FEMALE THREAD

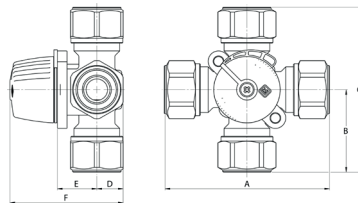
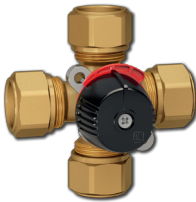
DIMENSION	KVS M ³ /H	A MM	B MM	C MM	D MM	E MM	F MM	WEIGHT KG
Rp 1 1/2"	25	106	53	106	33	43	110	1,6
Rp 2"	40	106	53	106	33	43	110	1,7



LK 841 2.0 - MALE THREAD

DIMENSION	KVS M ³ /H	A MM	B MM	C MM	D MM	E MM	F MM	WEIGHT KG
G ¾"	2,5	80	40	80	18	29	81	0,6
G 1"	4,0	80	40	80	18	29	81	0,5
G 1"	6,3	80	40	80	18	29	81	0,5
G 1¼"	10	82	41	82	20	29	83	0,6
G 1½"	16	84	42	84	24	32	90	0,7

The connecting dimensions for 841 ThermoMix 2.0 male thread equals 841 ThermoMix 1.0.

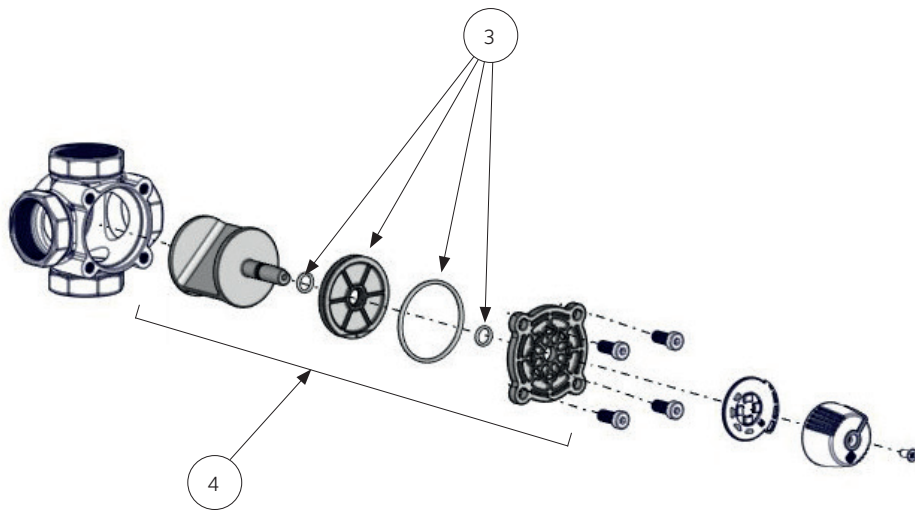
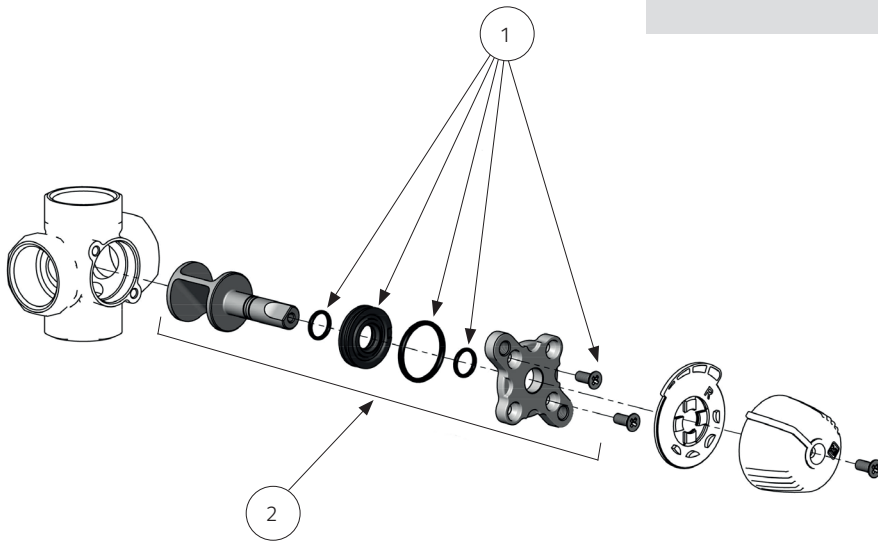


LK 841 2.0 - COMPRESSION FITTING

DIMENSION	KVS M ³ /H	A MM	B MM	C MM	D MM	E MM	F MM	WEIGHT KG
15 mm	2,5	114	57	114	18	29	81	0,9
18 mm	2,5	114	57	114	18	29	81	0,9
22 mm	2,5	114	57	114	18	29	81	0,9
28 mm	4,0	120	60	120	18	29	81	0,8
28 mm	6,3	120	60	120	18	29	81	0,8

SPARE PARTS AND ACCESSORIES

ARTICLE	POSITION
Sealing kit 840/841 2.0, DN 15-20	1
Sealing kit 840/841 2.0, DN 25	1
Sealing kit 840/841 2.0, DN 32	1
Repair kit 841 2.0, DN 15-20	2
Repair kit 841 2.0, DN 25	2
Repair kit 841 2.0, DN 32	2
Sealing kit 840/841 2.0, DN 40-50	3
Repair kit 841 2.0, DN 40-50	4





LK Armatur, A One-Stop Supplier

LK Armatur AB is part of the LK Group and an important supplier of valves, components, prefabricated units and electronic heat regulation for the global OEM and distributor market.

LK Armatur produces more than one and a half million valves per year, ranging from simple standard valves to sophisticated, customized special products.

We focus on customers who see energy saving and environmental awareness as a matter of course and has stringent requirements for quality, customization and delivery reliability.



Cerbo

küttesüsteemid • müük • paigaldus • hooldus
tel +372 442 0222 / +372 434 1000 • info@cerbos.ee
Paide mnt 7, Pärnu 80042, Eesti • www.cerbos.ee



LK Armatur

LK Armatur AB

Garnisonsgatan 49
SE-254 66 Helsingborg
Sweden

Phone: +46 (0) 42 16 92 00

Fax: +46 (0) 42 16 92 20

info@lkarmatur.se

order@lkarmatur.se

www.lkarmatur.se

Do you want to know more?

Visit our website.

www.lkarmatur.se